



COLD CLIMATE HEAT PUMP SPECIFICATIONS

90 Monarch Road
Guelph, Ontario, N1K 1S3

Phone: 855-658-4330
Fax: 855-658-9384

www.ecologix.ca
info@ecologix.ca

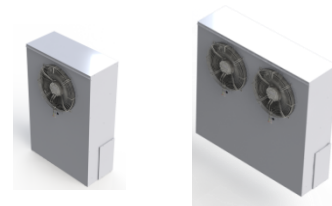
Air to Air Cold Climate Heat Pumps



A2ASP200-2-LI-B with
ECHP200-HBU



A2A540-D-LI-B with
ECHP500-4-HBU



Outdoor units for 200 & 540 series

PERFORMANCE SPECIFICATIONS

	A2ASP200-2-LI-B			A2A540-D-LI-B		
	8.3°C (47°F)	-8.3°C (17°F)	-25°C (-13°F)	8.3°C (47°F)	-8.3°C (17°F)	-25°C (-13°F)
Capacity (MBTU/hr)	19.5	14.7	11.7	14.8 to 47.9	10.7 to 34.5	6.7 to 21.5
Capacity (kW)	5.7	4.3	3.4	4.3 to 14.0	3.1 to 10.1	2.0 to 6.3
System COP	2.9	2.4	1.8	3.2	2.7	2.2
HSPF Region 4¹	-			9.2		
HSPF Region 5²	-			8.4		
Max. Air Flow	800 cfm (377.6 L/s)			1400 cfm (566.3 L/s)		
External Static	0.5" WC			0.5" to 1.5" WC		
Cooling Capacity	Tons	1.5		3.5		
	kW	5.3		14.1		

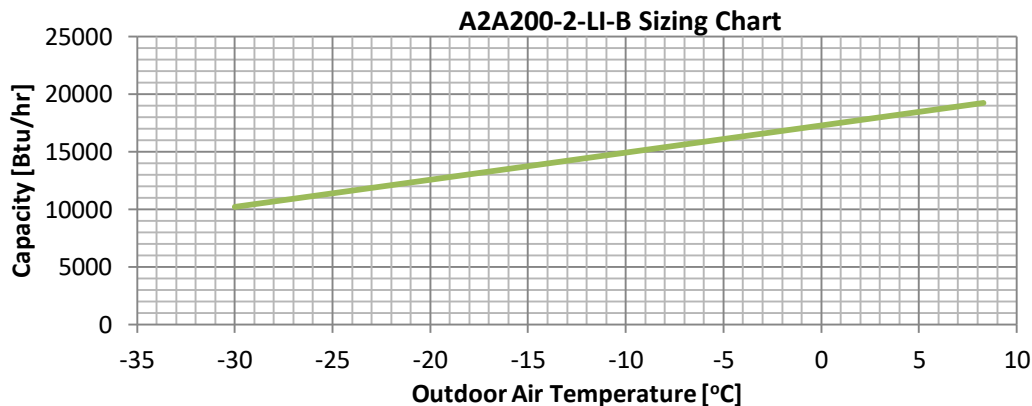
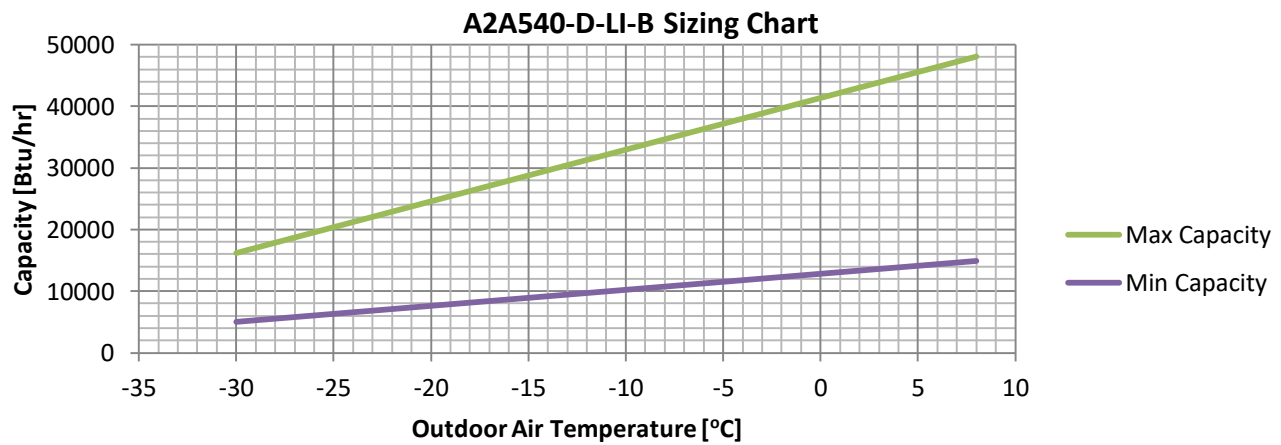
Note: Performance data subject to change. Please refer to latest version at time of purchase. Performance values based on 21.1°C return air temperature and maximum fan speed. Digital heat pump uses variable capacity compressor and will adjust as needed to meet demand. Capacity ranges shown are minimum and maximum at the rated outdoor air temperature. 200 series is a two stage compressor with liquid injection. 500 series is digitally variable flow compressor with liquid injection. 1 to 4 zones. COP is rated maximum within published operating range.

1. For Northern USA and ARI 240/210-2008 Standard (Region 4). 2. For Canadian climate and Canadian Energy Star (Region 5).

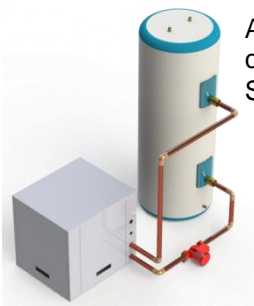
PHYSICAL SPECIFICATIONS

Indoor Heat Pump	A2ASP200-2-LI-B	A2A540-D-LI-B
Voltage (V/PH/Hz)	230/1/60	230/1/60
Compressor LRA	90	134
Minimum Circuit Ampacity (A)	24	42
Maximum Fuse size (A)	30	70
Weight – Indoor Unit (pounds)	90	180
Indoor Comp. Cabinet Dim(W x D x H)	22" x 25" x 24"	25" x 30" x 30"
Liquid Line Size O.D. (inches)	3/8	5/8
Vapour Line Size O.D. (inches)	5/8	7/8
Domestic Assist conn (inches)	1/ 2	1/ 2
Factory Refrig. Charge (ounces)	45	100

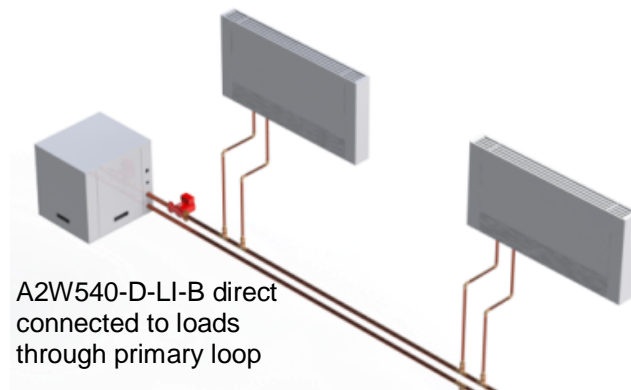
Heat Pump air Handler	ECHP200-HBU	ECHP500-x-HBU
Dimensions, single zone (W x D x H) inches	14x25x26	23x25x32
Dimensions, multi zone (W x D x H) inches	14x25x36	23x25x42
Supply Air single zone (WxD) inches	12"x20"	20"x20"
Supply Air multi zone (WxD) inches	2@10"Ø	4@10"Ø
Return Air (WxD) inches	14"x23"	18"x23"
Filter Rack Size (WxD) inches	16"x25"	20"x25"
Water inlet and outlet	1/2"	3/4"
Back up coil size (length x width - rows)	13x20-2R	22x20-2R
Shipping weight – pounds	60	88
Power (Volts/Phase/Hz)	115/1/60	230/1/60
Total Unit FLA	6.3	6.0
Minimum Ampacity	7.7	8.0
Max over current (fuse size) Amps	15	15
Motor Horsepower	1 /3	3 /4
Blower Model	10x5	10x10
Cased Coil Dimensions(W x D x H) inches	5x25x18	10x25x30



Air to Water Cold Climate Heat Pumps



A2W600-2-LI-B
connected to Thermal
Storage tank



A2W540-D-LI-B direct
connected to loads
through primary loop

PERFORMANCE SPECIFICATIONS

	A2W540-D-LI-B						A2W600-2-LI-B						
	<ul style="list-style-type: none"> 4-1/2 Ton digital compressor Liquid injection Thermal Storage Optional 						<ul style="list-style-type: none"> 5 Ton two-stage compressor Liquid injection Thermal Storage Required (field supplied) 						
Outdoor Temp.	8.3°C (47°F)		-8.3°C (17°F)		-25°C (-13°F)		8.3°C (47°F)		-8.3°C (17°F)		-25°C (-13°F)		
Inlet Load Temp.	30°C (86°F)	40°C (104°F)	30°C (86°F)	40°C (104°F)	30°C (86°F)	40°C (104°F)	30°C (86°F)	40°C (104°F)	30°C (86°F)	40°C (104°F)	30°C (86°F)	40°C (104°F)	
Capacity (MBTU/hr.)	14.7 to 47.5	13.4 to 43.2	10.8 to 34.7	8.8 to 28.6	6.9 to 22.2	6.0 to 19.3	48.0	41.8	36.8	32.0	25.0	21.8	
Capacity (kW)	4.3 to 13.9	3.9 to 12.7	3.2 to 10.2	2.6 to 8.4	2.0 to 6.5	1.8 to 5.7	14.1	12.3	10.8	9.4	7.3	6.4	
Heat Pump COP³	3.7	2.7	3.0	2.0	2.5	1.8	3.3	2.3	2.9	2.0	2.1	1.5	
Cooling Capacity	Tons	4						4					
	kW	14						14					

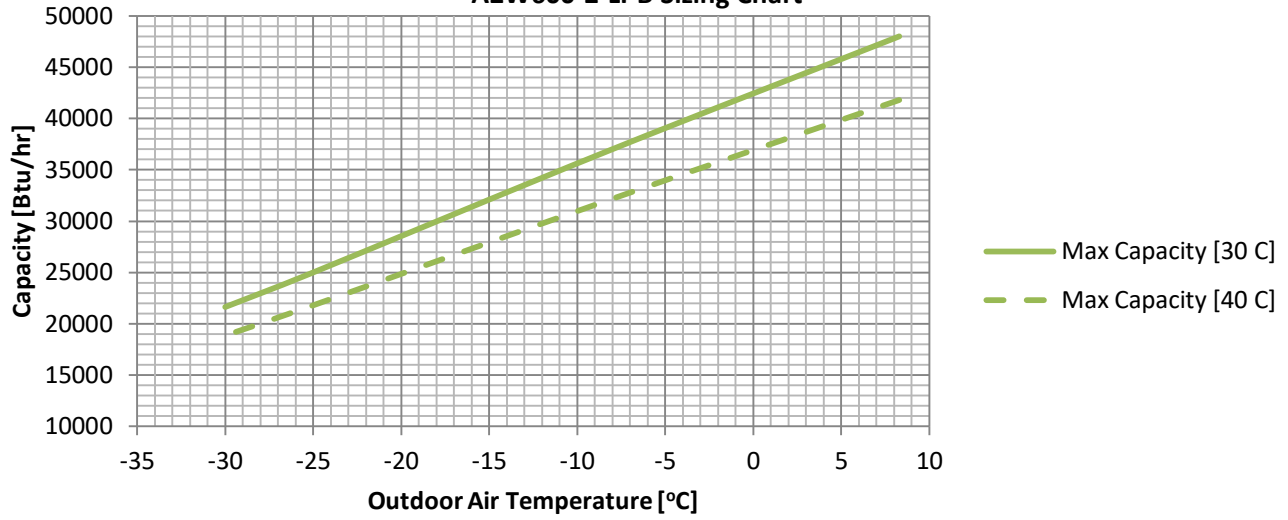
Notes : Performance data subject to change. Performance based on load-side water flow rate of 12 gpm.

- Digital Heat pump uses variable capacity compressor and will adjust as needed to meet demand. Capacity ranges shown are minimum and maximum at the rated outdoor air temperature. Tank not included.
- Two stage Heat pump uses two-stage compressor and will adjust based on demand. Capacities shown are for second stage. First stage capacities are approximately 2/3 of the values given. Tank not included.
- Rated maximum COP within published operating range. Excludes pump power.

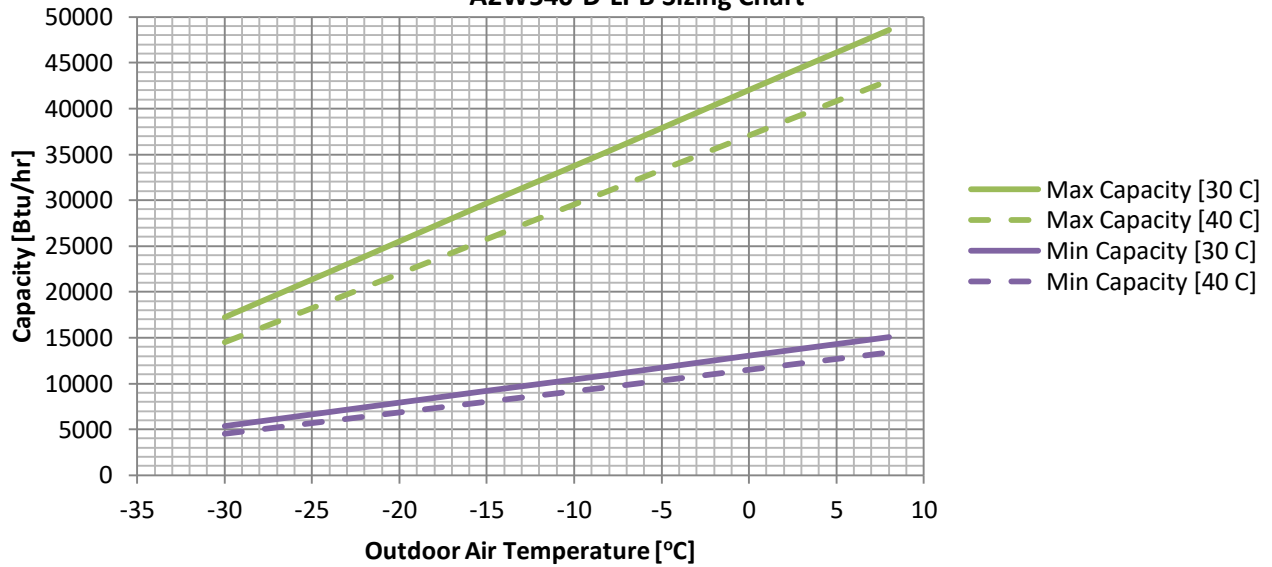
PHYSICAL SPECIFICATIONS

	A2W540-D-LI-B	A2W600-2-LI-B
Voltage (V/PH/Hz)	230/1/60	230/1/60
Compressor LRA	134.0	179.2
Minimum Circuit Ampacity (A)	37	43
Maximum Fuse size	60	70
Weight – Indoor Unit (pounds)	240	238
Indoor Cabinet Dim(W x D x H)	25" x 30" x 30"	25" x 30" x 30"
Liquid Line Size O.D. (inches)	5/8	5/8
Vapour Line Size O.D. (inches)	7/8	7/8
Domestic Assist HX plumbing (inches)	½	½
Factory Refrigerant Charge (ounces)	45	52




A2W600-2-LI-B Sizing Chart



A2W540-D-LI-B Sizing Chart



Outdoor Modules

Models		
OD-200-WM	OD-500-SA	OD-500-WM
		
<ul style="list-style-type: none"> • Wall-mount module for 200 series heat pumps 	<ul style="list-style-type: none"> • Stand-alone module for 500 and 600 series heat pumps 	<ul style="list-style-type: none"> • Wall-mount module for 500 and 600 series heat pumps
27.25" x 12" x 42" (W x D x H)	43.25" x 30" x 56" (W x D x H)	43.25" x 12" x 42" (W x D x H)

Note: Dimensions subject to change. Please refer to latest version at time of purchase.