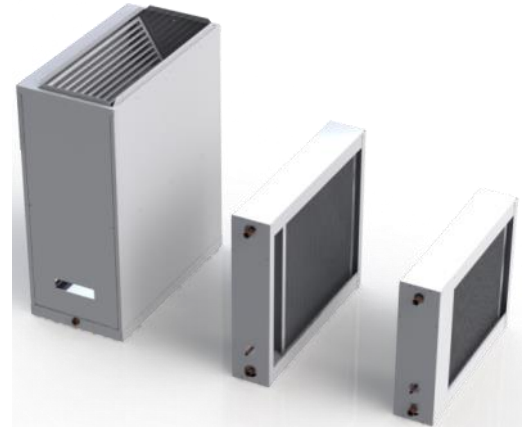


Cased water coils

- Aluminum fin on copper tube.
- Suitable for heating applications using water based heat pumps, domestic hot water (combo heating) or hydronic/boiler.
- 150 psi maximum pressure, 180°F maximum operating temperature.
- G90 galvanized cabinet. Drain pan included for chilled water use.
- Cased coils are for horizontal air flow only.
- UC3020 sloped coil suitable for horizontal flow, or top return / side outlet.



Catalogue No.	Airflow (cfm)	Heating Capacity (MBH)			Cooling Capacity (MBH)		
		110°F	140°F	180°F	50°F	45°F	40°F
CW1320-02	800	18.6	33.0	52.7	14.2	17.1	20.2
CW1320-03	800	22.7	39.8	63.5	18.5	22.7	26.9
CW2220-02	1400	25.2	46.6	76.5	25.0	30.1	35.6
CW2220-03	1400	35.2	66.1	110.9	31.5	38.4	45.5
CW3020-04	2000	55.1	99.8	160.6	43.3	52.0	61.0

Notes:

Heating air inlet 70F. Cooling air inlet 80F/67F.

*If no values shown in cooling table, carryover in cooling mode is likely and therefore not recommended.

1) Plumbing pipe sizes are nominal. Drain connection is actual OD pipe diameter for hose connection

Catalogue No.	Cabinet dimensions (in.)				Line connections ¹		
	Width	High	Depth	Filter	Supply	Return	drain
CW1320	5	18	25	16x25	1/2"	1/2"	3/4"
CW2220	5	23	25	20x25	3/4"	3/4"	3/4"
CSW3020	14	30	25	20x25	1"	1"	7/8"



Print Date:10/3/2018