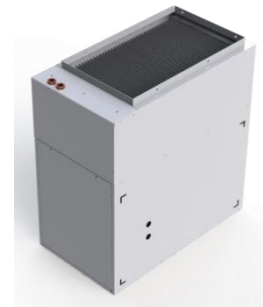


Ecologix EM series MAKE UP AIR units

Works with boilers or heat pumps to provide make up air for residential and commercial buildings.

- High efficiency ECM blower motor for electrical savings.
- Air flow is adjustable from 20% to 100% in any mode.
- Cycle timer built in for exercising pump every 24 hours.
- Controller selected circulation pump function to either cycle On/Off based on internal discharge air temperature or to run constantly for use with an externally controlled valve system.
- Compatible with all 24-volt heat/cool and heat pump thermostats.
- All 24V controls located inside electrical box, accessible through front cover.
- Push button connectors for thermostat wires for fast installation. High quality wire harnesses for quick servicing and component swap out.
- Robust surge suppression for protection against lightning strikes.
- Flexible mounting: unit mounts in any direction: up, down, horizontal discharge left or right.
- Heating coil comes complete with built in pump and check valve.
- Add-on cooling (sold separately) is easy with a slab coil on return air or "A" coil in the supply air plenum. Hydronic coils are also available for add-on chilled water cooling.
- All service access is through front panels.
- Attractive white powder coat finish. Galvanized steel cabinet post painted for long life even in wet environments.
- Uses standard filter frame (sold separately).
- Blower housing with forward curved zinc coated steel blower wheel. G90 galvanized steel suitable for use in wet environments. Airflow selection can be fixed speed or multi stage.



EM33,40



EM46,66,70



EM98

Physical Properties

MODEL:	EM33	EM40	EM46	EM66	EM70	EM98
Dimensions (W x D x H) inches	14x25x26	14x25x26	23x25x32	23x25x32	23x25x32	37x25x32
Supply Air (WxD) inches	12"x20"	12"x20"	20"x20"	20"x20"	20"x20"	20"x20"
Return Air (WxD) inches	14"x23"	14"x23"	18"x23"	18"x23"	18"x23"	18"x23"
Filter Rack Size (WxD) inches	16"x25"	16"x25"	20"x25"	20"x25"	20"x25"	20"x25"
Water inlet and outlet	½"	½"	¾"	¾"	¾"	¾"
Coil size (length x width - rows)	13x20-2R	13x20-3R	22x20-2R	22x20-3R	22x20-3R	30x20-4R
Shipping weight – pounds	60	68	80	80	88	100
Power (Volts/Phase/Hz)	115/1/60	115/1/60	115/1/60	115/1/60	230/1/60	230/1/60
Total Unit FLA	6.3	6.3	6.3	6.3	6.0	6.0
Minimum Ampacity	7.7	7.7	7.7	7.7	8.0	8.0
Max over current (fuse size) Amps	15	15	15	15	15	15
Motor Horsepower	1 / 3	1 / 3	1 / 3	1 / 3	1 / 2	1 / 2
Blower Model	10x5	10x5	10x9	10x9	10x9	10x9

PERFORMANCE Specifications

MODEL:	EM33	EM40	EM46	EM66	EM70	EM98
Boiler Input (Btu/h) @ +10F ODA	52,000	52,000	89,500	89,500	108,600	108,600
Boiler Input (Btu/h) @ 0F ODA	60,000	60,000	104,900	104,900	127,300	127,300
Boiler Input (Btu/h) @ -10F ODA	68,800	68,800	Not recommended	120,300	Not recommended	145,600
Boiler Input (Btu/h) @ -30F ODA	Not recommended	86,400	Not recommended	152,000	Not recommended	183,600
Cooling Capacity – High (Tons)	2.0	2.0	3.5	3.5	5.0	5.0
Cooling Capacity – Med. (Tons)	1.5	1.5	3.0	3.0	4.0	4.0
Cooling Capacity – Low (Tons)	1.0	1.0	2.0	2.0	3.0	3.0
Maximm air flow (cfm)	800	800	1400	1400	1700	1700
Continuous run - 5 speeds	20% to 100%	20% to 100%	20% to 100%	20% to 100%	20% to 100%	20% to 100%
Heating Air flow – 5 speeds	20% to 100%	20% to 100%	20% to 100%	20% to 100%	20% to 100%	20% to 100%
Cooling air flow – 5 speeds	20% to 100%	20% to 100%	20% to 100%	20% to 100%	20% to 100%	20% to 100%
Circulator Pump Flow(GPM)	4.0	4.0	5.0	6.0	6.0	9.0
Max. Ext. Static Pressure (in.wc.)	1.5	1.3	1.0	1.0	0.8	0.8

Performance based on 50% propylene glycol at 160F water inlet temperature and 68F air supply temperature at air inlet conditions shown. Boiler input is shown for Outdoor Air (ODA) design conditions where coil is adequately sized to meet the required condition.

Operation not recommended where boiler input required to achieve 68F delivered air temperature exceeds coil capacity at rated condition. For operating conditions other than shown, consult factory.

98 series air handler includes an external heating coil and pump to be field mounted. Width shown for 98 series air handler includes cased heating coil.