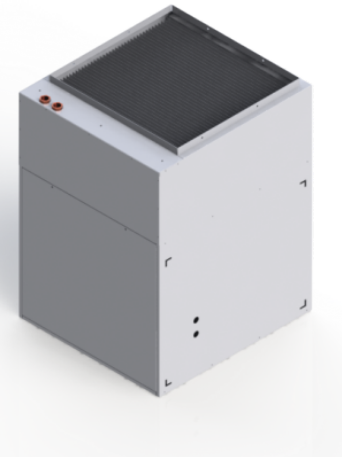
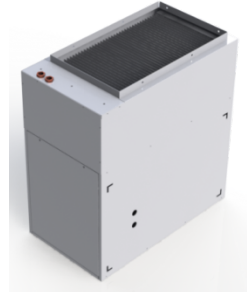


## Ecologix EC series air handlers

**Works with domestic water heaters, boilers or heat pumps to provide space heating and cooling for residential homes.**

- High efficiency ECM blower motor for electrical savings.
- Cycle timer built in for exercising pump every 24 hours. Test button on circuit board allows fast verification of cycle timer function.
- Heating, cooling and continuous fan speeds are all independently and easily selectable using rotary switches for maximum flexibility.
- Compatible with all 24-volt heat/cool and heat pump thermostats.
- All 24V controls located inside electrical box, accessible through front cover.
- Microprocessor based design with advanced control logic.
- Push button connectors for thermostat wires for fast installation. High quality wire harnesses for quick servicing and component swap out.
- Lighted service area provides high visibility in poorly lit locations.
- LED indicators on all thermostat inputs and control outputs. LED status tables and trouble codes for easy diagnostics.
- Robust surge suppression for protection from lightning strikes.
- Flexible mounting: unit mounts in any direction: up, down, horizontal discharge left or right.
- Heating coil comes complete with built in pump and check valve.
- Add-on cooling (sold separately) is easy with a slab coil on return air or "A" coil in the supply air plenum. Hydronic coils are also available for add-on chilled water cooling.
- All service access is through front panels.
- Compatible with standard duct systems or can be used in small diameter duct systems to minimize plenum sizes.
- Knock outs for standard filter frame (sold separately) on sides or bottom.
- Attractive white powder coat finish. Galvanized steel cabinet post painted for long life even in wet environments.
- Blower housing with forward curved zinc coated steel blower wheel. G90 galvanized steel suitable for use in wet environments.



## Physical Properties

MODEL:	EC33	EC40	EC42	EC46	EC66	EC70	EC80
Dimensions (W x D x H) in	14x25x26	14x25x26	14x25x26	23x25x32	23x25x32	23x25x32	23x25x32
Supply Air (WxD) inches	12"x20"	12"x20"	12"x20"	20"x20"	20"x20"	20"x20"	20"x20"
Return Air (WxD) inches	14"x23"	14"x23"	14"x23"	18"x23"	18"x23"	18"x23"	18"x23"
Filter Rack Size (WxD) in	16"x25"	16"x25"	16"x25"	20"x25"	20"x25"	20"x25"	20"x25"
Water inlet and outlet	½"	½"	½"	¾"	¾"	¾"	¾"
Coil size (LxW - rows)	13x20-2R	13x20-3R	13x20-3R	22x20-2R	22x20-3R	22x20-3R	22x20-3R
Shipping weight – pounds	60	65	65	80	85	88	88
Power (V)	115 or 208-240	115 or 208-240	115 or 208-240	115 or 208-240	115 or 208-240	115 or 208-240	115 or 208-240
Total Unit FLA @ 115V	3.62	3.62	3.88	7.48	12.58	12.58	12.58
Total Unit FLA @ 230V	1.81	1.81	1.94	3.74	6.29	6.29	6.29
Max overcurrent A @ 115V	15	15	15	15	25	25	25
Max overcurrent A @ 230V	15	15	15	15	15	15	15
Motor Horsepower	1/5	1/5	1/3	1/2	1/2	1/2	3/4

## PERFORMANCE Specifications

MODEL:	EC33	EC40	EC42	EC46	EC66	EC70	EC80
Heating Capacity (Btu/h) 100F	14,000	17,000	18,700	18,400	25,400	26,500	27,600
Heating Capacity (Btu/h) 110F	18,600	22,700	24,970	25,200	35,200	36,800	38,500
Heating Capacity (Btu/h) 120F	23,200	28,200	31,020	32,200	45,300	47,400	49,500
Heating Capacity (Btu/h) 130F	27,900	33,800	37,180	39,400	55,700	58,400	61,200
Heating Capacity (Btu/h) 140F	33,000	39,800	43,780	46,600	66,100	69,400	72,800
Heating Capacity (Btu/h) 160F	42,900	51,800	56,980	61,400	87,900	92,400	97,000
Heating Capacity (Btu/h) 180F	52,700	63,500	69,850	76,500	110,900	116,900	122,900
Cooling Capacity (Tons)	1.0-2.0	1.0-2.0	1.5-2.5	1.5-3.5	1.5-3.5	2.5-5.0 <sup>(3)</sup>	3.5-5.0
Continuous run - 5 speeds	20% to 100%	20% to 100%	20% to 100%	20% to 100%	20% to 100%	20% to 100%	20% to 100%
Heating Air flow – 5 speeds	20% to 100%	20% to 100%	20% to 100%	20% to 100%	20% to 100%	20% to 100%	20% to 100%
Cooling air flow – 5 speeds	20% to 100%	20% to 100%	20% to 100%	20% to 100%	20% to 100%	20% to 100%	20% to 100%
Circulator Pump Flow (GPM)	4.0	4.0	4.0	6.0	6.0	6.0	6.0
Airflow (CFM) at 0.5 in.wc	800	800	1000	1400	1400	1700	2000
Max. Ext. Static Pressure (in.wc)	1.0	1.0	1.0	1.0	1.0	0.5	0.5

1. Heating capacities are based on 70F return air, high fan speed.
2. Air handler can deliver the programmed airflow at any static pressure below the maximum external static pressure. Allow 0.25 inches w.c. for external AC coil.
3. EC70 is capable of 5 Tons of cooling SHR =70% or lower. EC70 System good for 4.5 Ton or less for all conditions.
4. Air handler pump can be substituted with 2-way zone valve at no extra charge for use in central boiler systems. Add suffix "ZV" when ordering.
5. See submittal sheets or Performance Charts for more details on individual air handlers when operating at different conditions to what is shown above.